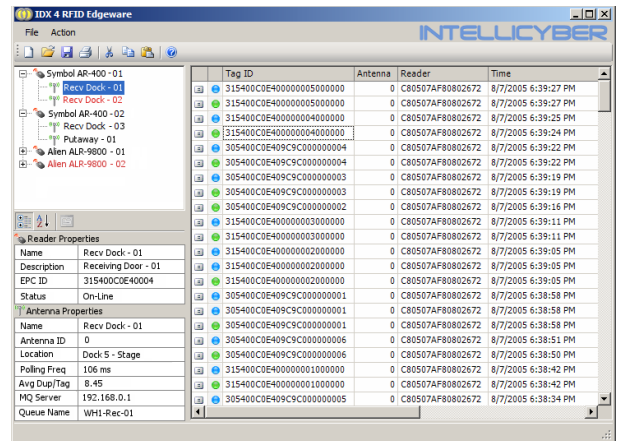


INTELLICYBER

## Introduction

Welcome to Radio Frequency Identification for the Infor Warehouse Management System. RFID is a means of encoding a serialized number onto a chip inside a label and attaching it to a unit and being able to read that through RF antennas.

Creating an infrastructure of readers and antennas controlled by the IDX Edgware software, which filters the data and sends it to the Infor WM forms the backbone of the **Intellicyber RFID solution**.



## Why Intellicyber RFID Systems?

A successful RFID implementation should be concerned with 3 factors.

- Getting the data from the tags
- Applying logic and managing the data
- Putting that data in the right place

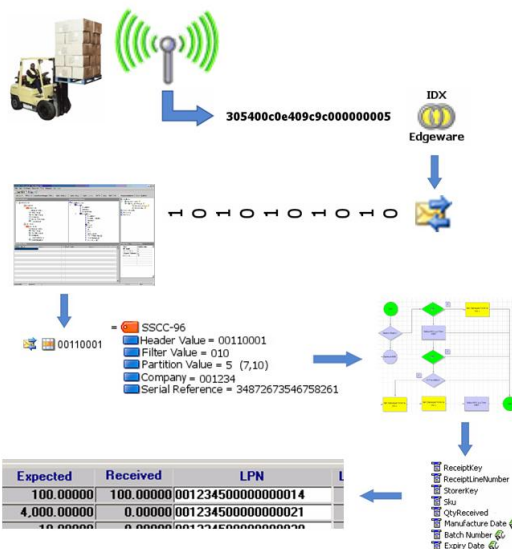
Intellicyber solutions manage each step of these processes, from controlling RFID hardware, sending the messages; applying complex logic and intelligence to the information and finally updating appropriate the Infor WM.

## What can I do?

RFID allows companies to streamline, expand and optimise logistics functions throughout the supply chain. From **manufacturers** and **distributors** through to **retail stores**, various operations can be conducted. From warehouse functions such as receiving product into a site, , putaway, cycle counts, picking, packing, loading, shipping through to supply chain initiatives like product recall, real time order tracking, intelligent adaptive self life and counterfeit goods management.

## The Components

Information is written onto a **chip** which is printed on a **label**. **Antennas** are connected to **readers** located in the appropriate areas of a warehouse, which are controlled by **IDX Edgware** software. **IDX**



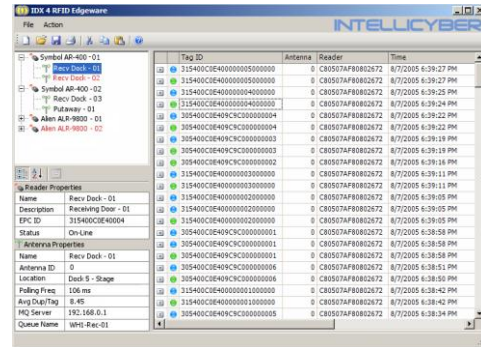
Edgware reads the tags as they pass by the antennas, and determined if the tag is a new tag read or not. The IDX Edgware will sort the (**hex**) data being read and pass it in a **bit stream** to a message queue, such as IBM MQ Series, or **MSMQ**. **IDX** will grab this stream on an interface server and **split** the data into the different values for each field based on a header value in the data, and predetermined logic. **IDX** will then lookup other data sources to find additional information. This type of lookup could include internal lookup such as determining pack from a SKU, or more complex information like batch from

manufacturing date, or external lookup through other systems like the EPC-IS. The whole information block is then updated into the Infor WM as an appropriate transaction, such as receiving, putaway confirmation or ship notification.

## IDX Edgware

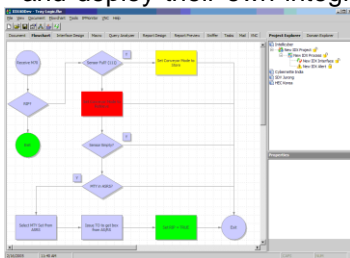
IDX Edgware connects directly to RFID readers and antennas, and supports all vendors including Symbol, Intermec and Alien, for Class 0, 1 and Gen 2 tags. IDX Edgware takes control of the RFID hardware and triggers the readers to keep looking for tags. Gen 1 tags of Class 0, Class 0+ and Class 1 are supported, along with Gen 2 tags.

Each antenna or reader is connected to a message queue. The Edgware takes each antenna tag read and makes sure it's complete, and sends a single good read to the appropriate message queue.



## Intellicyber Developer Exchange (IDX)

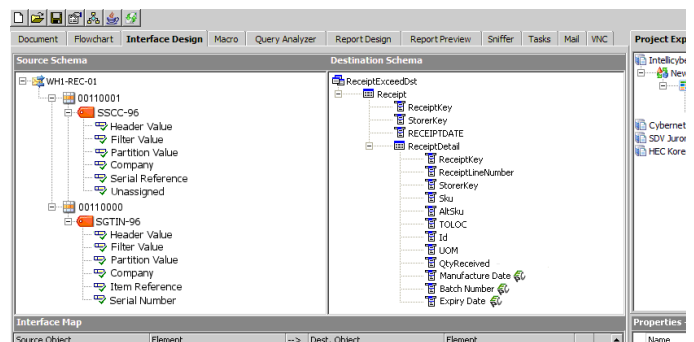
IDX is a visionary concept in the organization, management and development of data management tools. IDX is a flexible set of tools that allow companies to manage, develop and deploy their own integration solutions. It is an integrated development environment



which brings together all of the essential tools needed when creating processes and interfaces. It has a built in report writer, alerting writing tool, business process designer, document, task and e-mail repositories.

As a single stream of data from the message queue can have many different tag definitions, the IDX developer will allow users to define the header tags, and then the child values to use, either EPC or your own unique user defined code.

Lookups on serial information may involve a database lookup, an EPC-IS search or programming logic.



## Ask for more information

Chris Gregory  
 Director of Solutions  
[chris\\_gregory@intellicyber.com](mailto:chris_gregory@intellicyber.com)

## About Intellicyber Ltd

Intellicyber Ltd has been developing software products designed to address supply chain data integration needs since 1999. Intellicyber combines supply chain domain expertise and technical innovation delivering superior solutions to customers around the world.

The Company operates a network of offices and partner locations around the world. For more information, please contact the Intellicyber headquarters below.

+ 65 6441 6609  
[www.intellicyber.com](http://www.intellicyber.com)